

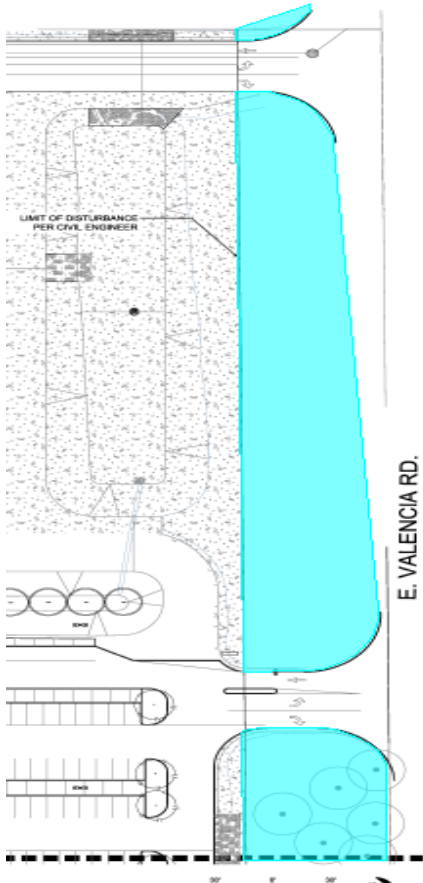
Basis of Adjacent Ways - Mica Mountain High School

GMP2 AW – Total Cost: \$415,868

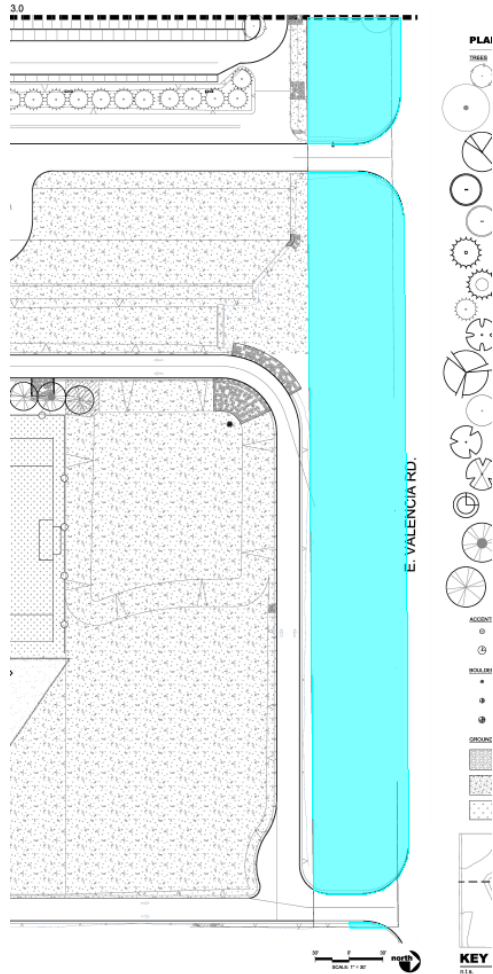
This Basis of Adjacent Ways document is to identify the cost necessary to cover fire equipment access lanes throughout the site as well as the off-site improvements adjacent to school property. The scopes of work that fall within these boundaries are as follows: Landscaping, Site Concrete, Primary Power to Electrical Transformer.

A. Off-Site Native Seed Mix

A1. From Stamped Plant Plan L3.0:



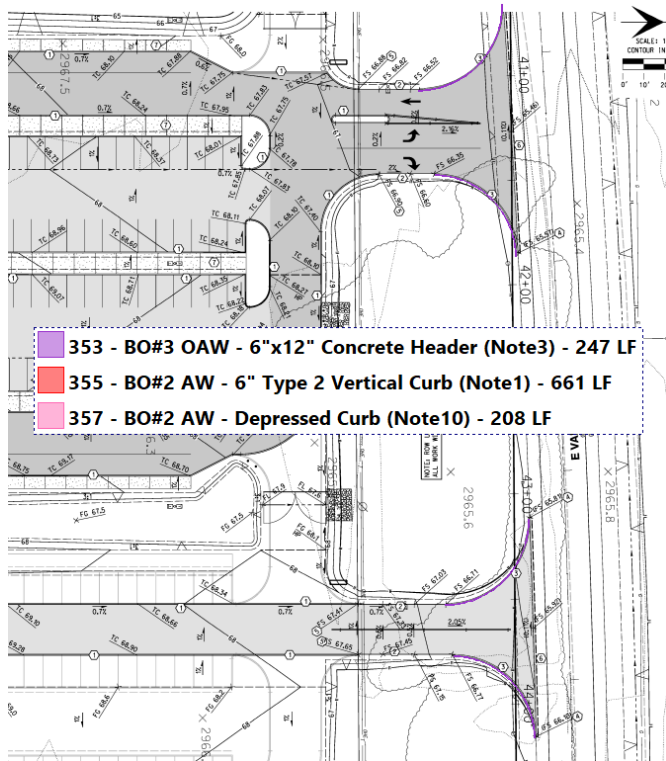
A2. Stamped Plant Plan L3.5:



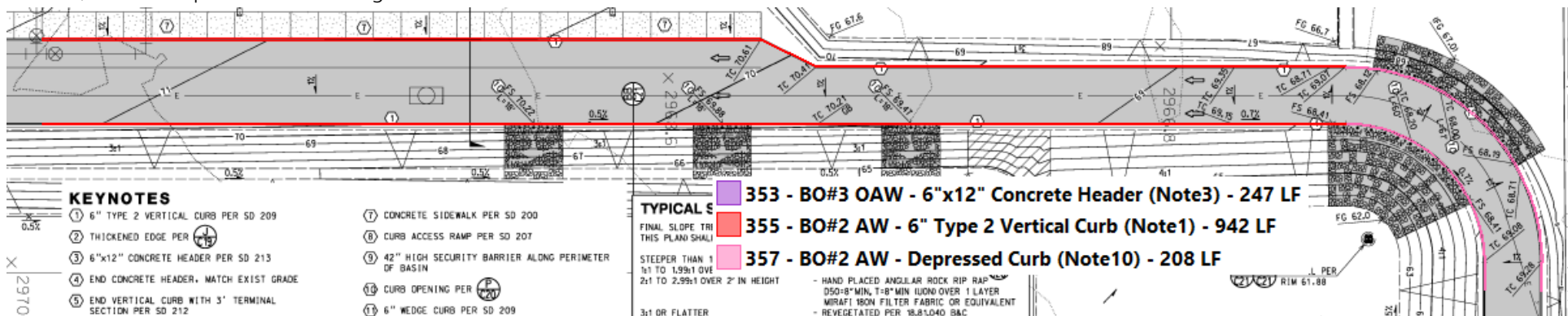
B1. From Approved Offsite Public Sewer Sheet 2 of 4:



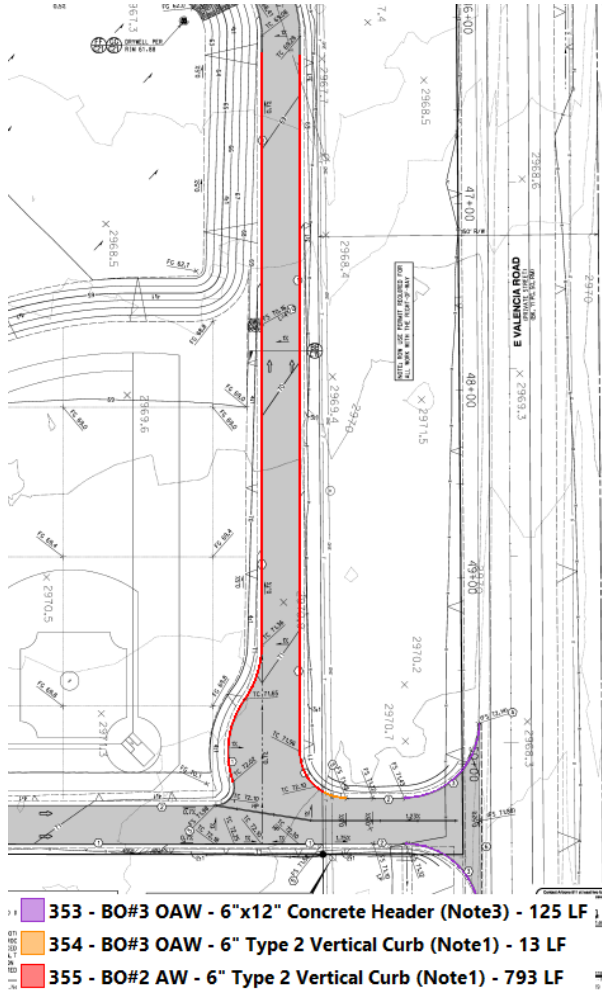
B3. From stamped CD Civil Set page C4:



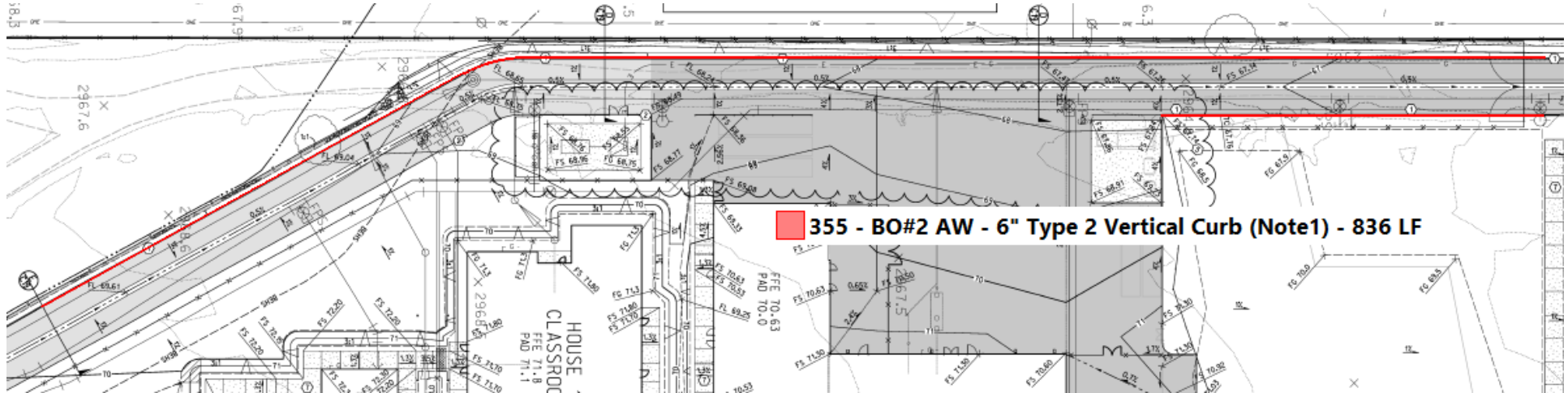
B4. Also, From Stamped CD Civil Set Page C4:



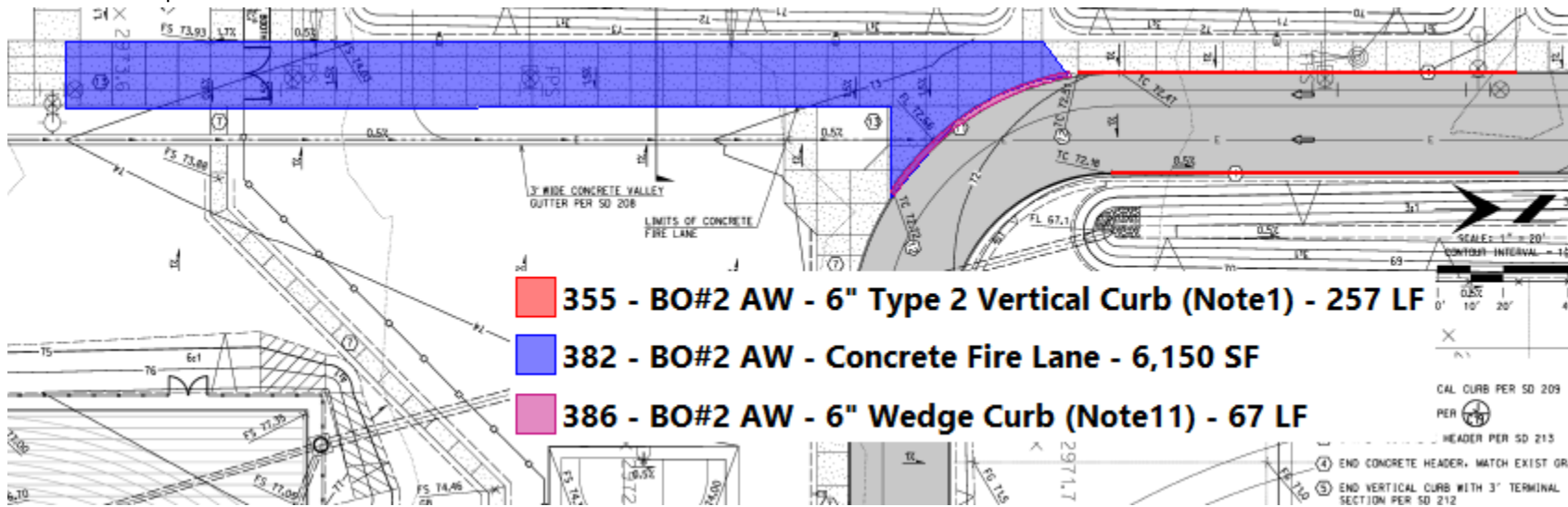
B5. From Stamped CD Civil Set page C5:



B6. From Stamped CD Set C8:



B7. From Stamped CD Set C8:



382 - BO#2 AW - Concrete Fire Lane - 13,095 SF

NG PER (P) 220

URB PER SD 209

L TO WEDGE TRANSITION

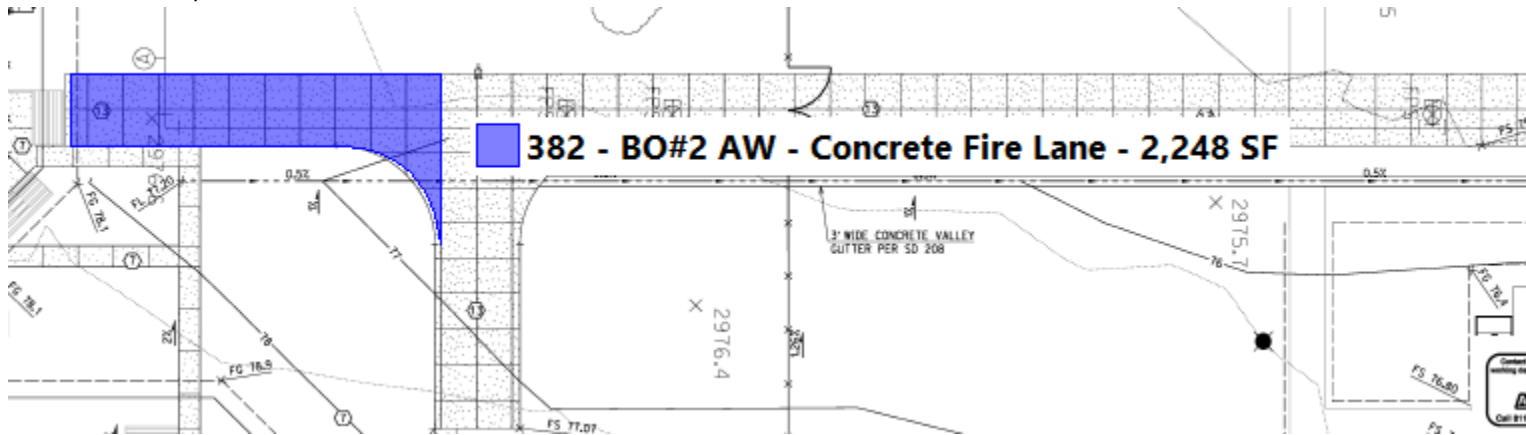
PAVING

355 - BO#2 AW - 6" Type 2 Vertical Curb (Note

CHANGES FROM CMP1

1001

B10. From Stamped CD set C11:



-----END OF BASIS OF ADJACENT WAYS-----